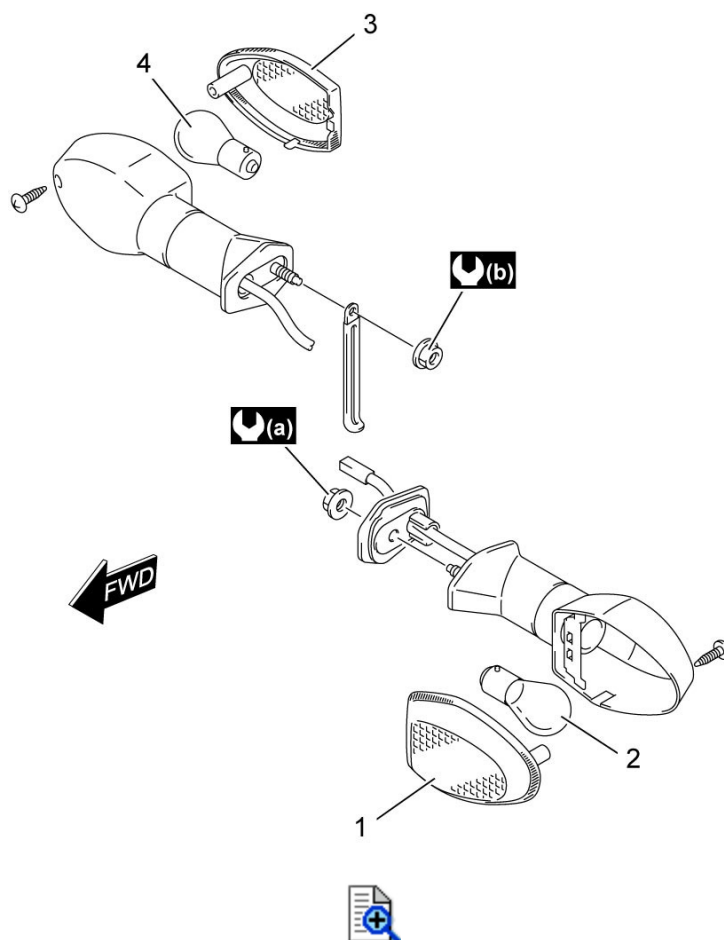




9B



Front Turn Signal Light / Rear Turn Signal Light Components



1.	Front turn signal lens
2.	Front turn signal light bulb (12 V, 21 W)
3.	Rear turn signal lens
4.	Rear turn signal light bulb (12 V, 21 W)
 (a):	1.3 N·m (0.13 kgf-m, 1.0 lbf-ft)
 (b):	1.8 N·m (0.18 kgf-m, 1.5 lbf-ft)